

THE GEORGE WASHINGTON UNIVERSITY

# Philanthropy Impact Report

2024



In a true only-at-GW moment, **Yahya Aliyu, B.S. '23, M.S. '24**, addresses an audience of thousands during the 2024 GW Commencement on the National Mall. Aliyu's GW experience was supported in part by the **Josephine R. Shepard Scholarship**, which was endowed by the largest one-time donation by an alumna or alumnus in GW's history.

Dear Friends,

As our world evolves in unpredictable ways and our lives encounter joy and challenge, I place increasing faith in institutions that form the foundation of our civic life. I am delighted to share GW's second Philanthropy Impact Report, highlighting the numerous ways donors to GW are making a tangible difference.

I am buoyed by the investments individuals, foundations, families, corporations, and government agencies continue to make in this university. GW's base of donors is growing, as is the engagement of our alumni—a testament to our supporters' belief in the power of GW to change the world.

Few organizations have GW's talent, access, and commitment to public leadership. This report reflects just some of the many ways these strengths, bolstered by your support, have an enduring impact.

Thank you for your commitment to GW.

For GW,



*Donna Arbide*

**Donna Arbide**  
Vice President, Development  
& Alumni Relations

*I look forward to discussing and exploring your personal philanthropic passions. I may be reached directly at [arbide@gwu.edu](mailto:arbide@gwu.edu) or 202-994-1058.*

# GW's community of supporters is strong and getting even stronger.

## In 2024, we:



Grew annual giving by

**8%**

over the previous 3-year average



Raised nearly

**\$33M**

in support of GW's talented students, **22%** over our previous 3-year average

## Contact Us

📞 800-789-2611

✉️ [giving@gwu.edu](mailto:giving@gwu.edu)

📱 [@gwalumni](#)

🌐 [giving.gwu.edu](http://giving.gwu.edu)

# GW Cares

The GW Cares Student Assistance Fund provides emergency funding for students facing financial hardship—covering housing, food, technology, or other urgent needs. Generous donors support ongoing emergency student needs through GW Cares, The Store (GW's Food Pantry), the Cokie and Steve Roberts SMPA Student Support Fund, and the Ron Howard Student Assistance Fund.

Since 2020, these initiatives have provided more than 4,700 instances of emergency support to GW students.



Grew our base of donors by

**7.8%**

over the previous fiscal year



Retained

**69%**

of our alumni donors, compared to an industry average of **59.7%**



Reached and engaged more than

**84,000**

alumni worldwide

"Navigating college can be treacherous at any age. When I took the leap to pursue my master's degree at GW, eight hours away from my family, we thought we had planned for every eventuality. But when I found myself facing unforeseen financial challenges, the GW Cares Fund was a crucial lifeline. Having access to those emergency funds allowed me to stay at GW and on track to achieving my dream."

– Andrew Mitakides, M.A. '26



Andrew Mitakides, M.A. '26

*Former Lindner Scholar Brook Colangelo, B.A. '00*





Since 1953, more than 500 GW students have benefited from the **Wolcott Foundation Fellowship** program. Thanks to a \$4 million gift to GW's endowment from the **Wolcott Foundation** in 2023, more students can pursue careers in public service for generations to come.



About 70% of GW students receive aid thanks to philanthropy and institutional commitments.



1,182 GW students received funding from endowed scholarships in 2023-24.



In the past three years, 128 new scholarship endowments were created, providing critical student support and helping open the doors to a GW education to talented young people in perpetuity.

# Sustaining a Legacy of Success

**Brook Colangelo, B.A. '00**, is a leader in digital transformation. During the rise of the internet, he helped build the Democratic Party's technology, pioneered the first social media-driven national political convention, and served as President Barack Obama's inaugural White House Chief Information Officer.

Yet, his journey from GW to the White House was nearly derailed.

After just one year at GW, Colangelo knew the university had opened new doors for his future. During his first year, while pursuing a degree in political communication, he served as Vice President of Thurston Hall and worked as a university tour guide while interning for Congresswoman Nancy Pelosi.

But as he prepared for his second year at GW, Colangelo's financial aid package fell short, and he worried his GW journey might end. Good news came in the form of the **Thaddeus A. and Mary Jean Lindner Scholarship**. Established by former parent and Trustee Emeritus **Thaddeus Lindner, B.A. '51, HON '94, and his wife, Mary Jean**, the scholarship supported Colangelo for the next three years.

"The Lindners exemplify GW values," Colangelo said. "Their GW experience helped them succeed, and they used that success to help hundreds of future students get a great GW education. It is humbling and inspiring to be a part of their story."

More than 200 GW students have received Lindner Scholarships since 1992. Recipients have gone on to hold senior positions in the U.S. government, Fortune 500 companies, the entertainment and sports industries, and organizations impacting sustainability, public health, and economic empowerment.

Colangelo's career has followed that successful trajectory. He has been named among the top 50 Most Powerful LGBT People by Out Magazine, Computerworld's Top 100 IT Leaders, Inspire's Boston Global CIO of the Year, and a Boston Business Journal LGBT Trailblazer.

**"GW gave me my confidence and helped me transform into the person I am now. I'm really, really thankful for that opportunity and for the scholarship that made it possible." – Brook Colangelo, B.A. '00**

Colangelo now serves as CIO of the Waters Corporation and sits on the Board of Directors for ISO New England and Somos, Inc.



GW scholars published 4,100+ journal articles, chapters, and monographs in 2023, and faculty have, on average, published more than 120 books a year for the last decade.



Michael Milken, HON '23, and Lori Milken created the Lynn R. Goldman Professorship and the Michael and Lori Milken Professorship with a \$6M endowment. These professorships support two faculty positions at the Milken Institute School of Public Health, which just celebrated its 25th anniversary.



**MARY ANNE FRANKS**

**The Eugene L. and Barbara A. Bernard Professor in Intellectual Property, Technology, and Civil Rights Law**

Franks is an internationally recognized expert at the intersection of civil rights, free speech, and technology and the president of the Cyber Civil Rights Initiative, a nonprofit organization dedicated to combating online abuse and discrimination.



**F. SCOTT KIEFF**

**The Stevenson Bernard Professor of Law Faculty Director, Center for Law, Economics & Finance**

A former commissioner on the U.S. International Trade Commission and an advisor to three Presidential administrations, Kieff is a renowned expert in intellectual property law, antitrust law, economics, and the politics of innovation.



**Irwin and Joan Jacobs** endowed two \$3M professorships, the **Joan and Irwin Jacobs Professorship in Biomedical Engineering** and the **Joan and Irwin Jacobs Professorship in Electrical Engineering**, which will advance engineering at GW.



## DANIEL J. SOLOVE

**The Eugene L. and Barbara A. Bernard Professor in Intellectual Property and Technology Law Faculty Co-Director, GW Center for Law and Technology**

Solove, recognized as the most-cited legal scholar in the law and technology field, has authored five books on privacy and data security, testified before Congress, and contributed to amicus briefs before the U.S. Supreme Court.

# Protecting Ideas That Change The World

For more than 150 years, GW has been preparing lawyers to protect the rights of the world's most important creators and inventors. Our alumni have authored landmark patents for Alexander Graham Bell's telephone, the Wright Brothers' flying machine, Enrico Fermi's nuclear reactor, and CRISPR gene-editing technology.

Today, new technology is changing the face of intellectual property (IP) and patent law, increasing fears about privacy and blurring lines of ownership. Donor support of endowed professorships underpins GW Law's deep bench of experts helping to understand the complex legal questions that arise as technological capability and intellectual property concerns collide.

**"We are consistently ranked as a top-five law school in intellectual property law. Now, we're expanding that expertise by incorporating exploration on the frontiers of privacy, cybersecurity, and artificial intelligence law with a powerhouse faculty that is renowned throughout the academy and industry. These globally recognized scholars undeniably enhance the educational experience of our students. No place in the country can rival our depth of expertise."**

**– Law School Dean Dayna Bowen Matthew**

Investments in professorships drive GW's academic excellence today and ensure GW remains responsive to a dynamic and increasingly tech-driven world. Last year, four dozen GW Law students received their juris doctorates with a concentration in IP and technology law, and the school just launched a new **Center for Law and Technology** that will place GW at the forefront of legal education in the rapidly evolving fields of privacy, cyber, AI, and emerging technologies while continuing to expand its global leadership in IP law.

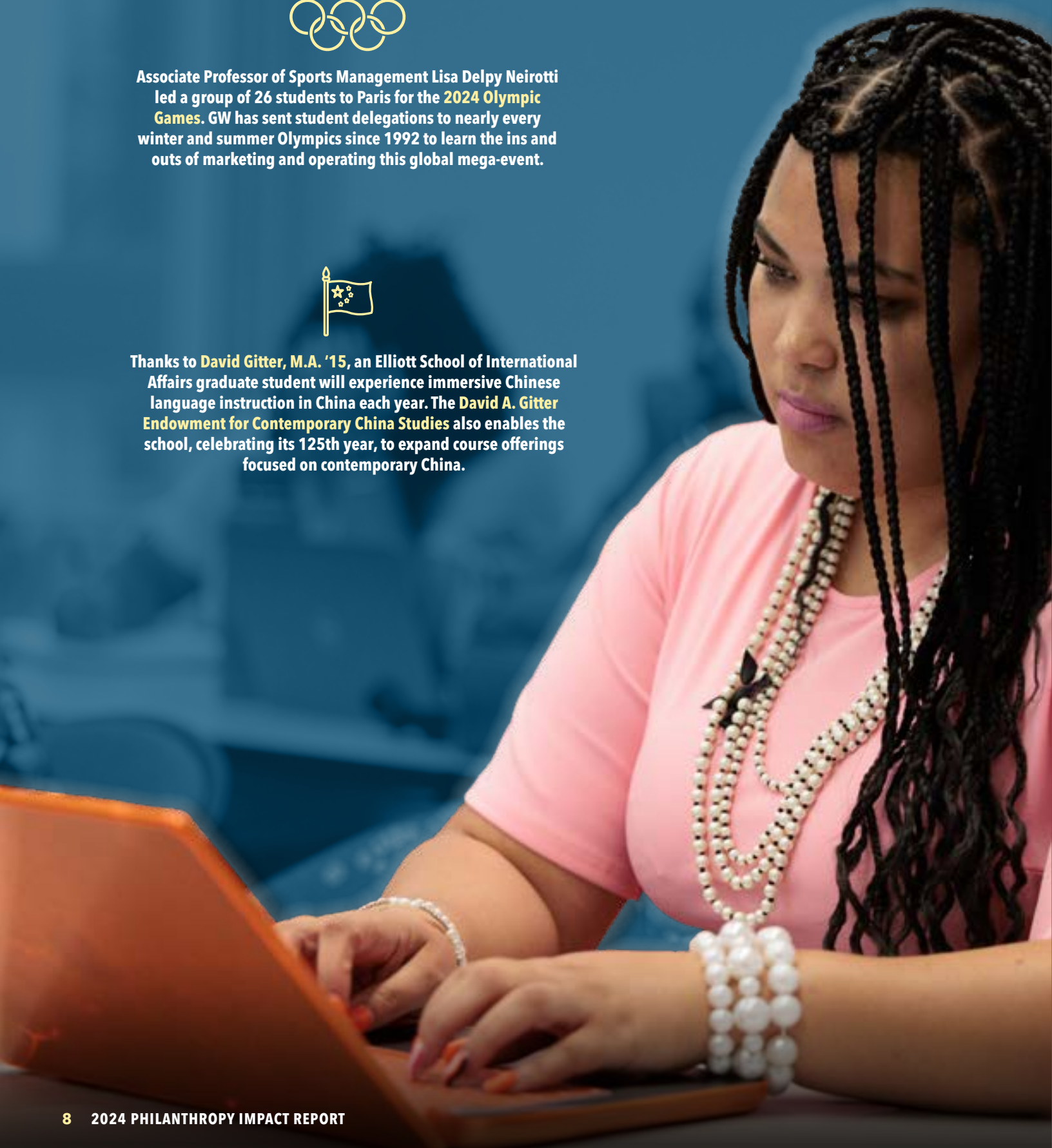
*A generous gift from an alumnus and his spouse supports three endowed law professorships focused on intellectual property law, ensuring GW Law remains a leader in IP scholarship and teaching as technology drives the field to evolve.*



Associate Professor of Sports Management Lisa Delpy Neirotti led a group of 26 students to Paris for the **2024 Olympic Games**. GW has sent student delegations to nearly every winter and summer Olympics since 1992 to learn the ins and outs of marketing and operating this global mega-event.



Thanks to **David Gitter, M.A. '15**, an Elliott School of International Affairs graduate student will experience immersive Chinese language instruction in China each year. The **David A. Gitter Endowment for Contemporary China Studies** also enables the school, celebrating its 125th year, to expand course offerings focused on contemporary China.





# Growing Leaders, Transforming Education



The Milken Institute School of Public Health's Health Policy and Management and online MPH programs are ranked in the top 10 nationally.

School districts nationally face a shortage of talented principals, and the situation is compounded by the pressing need for administrators equipped to address inequities in our schools.

**DC Public Schools** (DCPS) and GW's Educational Leadership and Administration (ELA) program are partnering to build an equity-centered principal pipeline. With a five-year grant from **The Wallace Foundation**, the GW/DCPS collaboration began with two years of intensive program design to prepare ELA students to advance educational equity as future school leaders. Throughout the 18-month graduate program, participants apply research and theory to their practice as DCPS instructional staff and complete a summer internship in DCPS schools.

"Through this partnership, we are going beyond providing exceptional professional development opportunities—which supports our retention efforts," said DCPS Chancellor and GW alumnus Dr. Lewis D. Ferebee. "The ELA program is helping us to cultivate a talent pool of equity-centered leaders from within our very educator workforce."

"Every assignment, every class, we are focusing on equity," said **Pernell Hicks, Ed.S. '25**, a DCPS assistant principal and member of the inaugural cohort.

**"For so long, some students have been underserved. Being equity-focused leaders helps us make sure students have the resources to be successful in school."**  
— Pernell Hicks, Ed.S. '25

"The strong partnership with DCPS and the support from The Wallace Foundation has tremendous impact, not just on the students but on the communities they serve," said Dr. Leslie Trimmer, cohort advisor and ELA faculty member.

Cohort member **Rian Reed, Ed.S. '25**, agrees. "They set the tone to say: this is community-oriented, this is about growth, this is about equity. We can all thrive together."

During her internship as a summer school principal, Reed and her leadership team collaborated with GW's Honey W. Nashman Center for Civic Engagement and Public Service to design project-based learning experiences with local partners including the Washington Youth Garden, where students worked alongside master gardeners.

Reed saw the impact where it matters most: "At the end of the summer, one student said, 'I didn't think I was smart before. Now I know I am.'"

*Rian Reed, Ed.S. '25,  
a member of the inaugural GW/DCPS  
equity-centered leadership cohort*



As the first medical school in the nation's capital and the 11th oldest in the country, **GW's School of Medicine & Health Sciences** has been at the forefront of medical education, training generations of compassionate health care professionals for 200 years.





The **Helene Fuld Health Trust**, the nation's largest funder devoted exclusively to nursing students and nursing education, has supported more than 50 GW nursing students since 2021.



For the past three years, **Dr. Adam Friedman**, chair of the SMHS dermatology department, has directed a free tele dermatology program that provides educational and medical support to underserved communities in Washington, D.C. The program is run in partnership with local and national patient organizations and has been made possible through grant support from **Pfizer, Johnson & Johnson Innovative Medicine, and Eli Lilly.**



The **Milken Institute School of Public Health** is among the top ten recipients of NIH funding in its category.

*Adopt-a-Doc recipient  
Georgia Barbayannis, M.D. '27*

# Adopt-A-Doc Program Builds Bridges Between Generations of Caregivers

**Georgia Barbayannis, M.D. '27**, had dreams of being a doctor since she was a kid. But she knew a top tier medical education would require years of study and years of tuition.

"I grew up in a working-class Greek immigrant household," Barbayannis said. "I was the first in my family to graduate from college, and I grew up helping my father in his decade-long battle with cardiovascular disease. So I know how challenging it can be to access both healthcare and higher education."

The GW Adopt-a-Doc Scholarship program, established in 2010 with a gift from **Russell Libby B.S. '74, M.D. '79**, provides critical financial support to medical students over the course of their GW medical education. More than half of Adopt-a-Doc donors are GW alumni like Libby who want to offer a helping hand to the next generation of doctors.

**"The Adopt-a-Doc scholarship has enabled me to focus on my academics and extracurricular activities while worrying less about student debt."**  
– **Georgia Barbayannis, M.D. '27**

Barbayannis considers her donor, **Keyur Shah, M.D. '04, and his wife, Natasha**, to be role models. "I hope to pay the Shahs' generosity forward by helping medical students from disadvantaged backgrounds achieve their dreams in the same way they have helped me."

Over the last 14 years, 80 Adopt-a-Doc Scholars have received financial support and made meaningful connections with their donors.

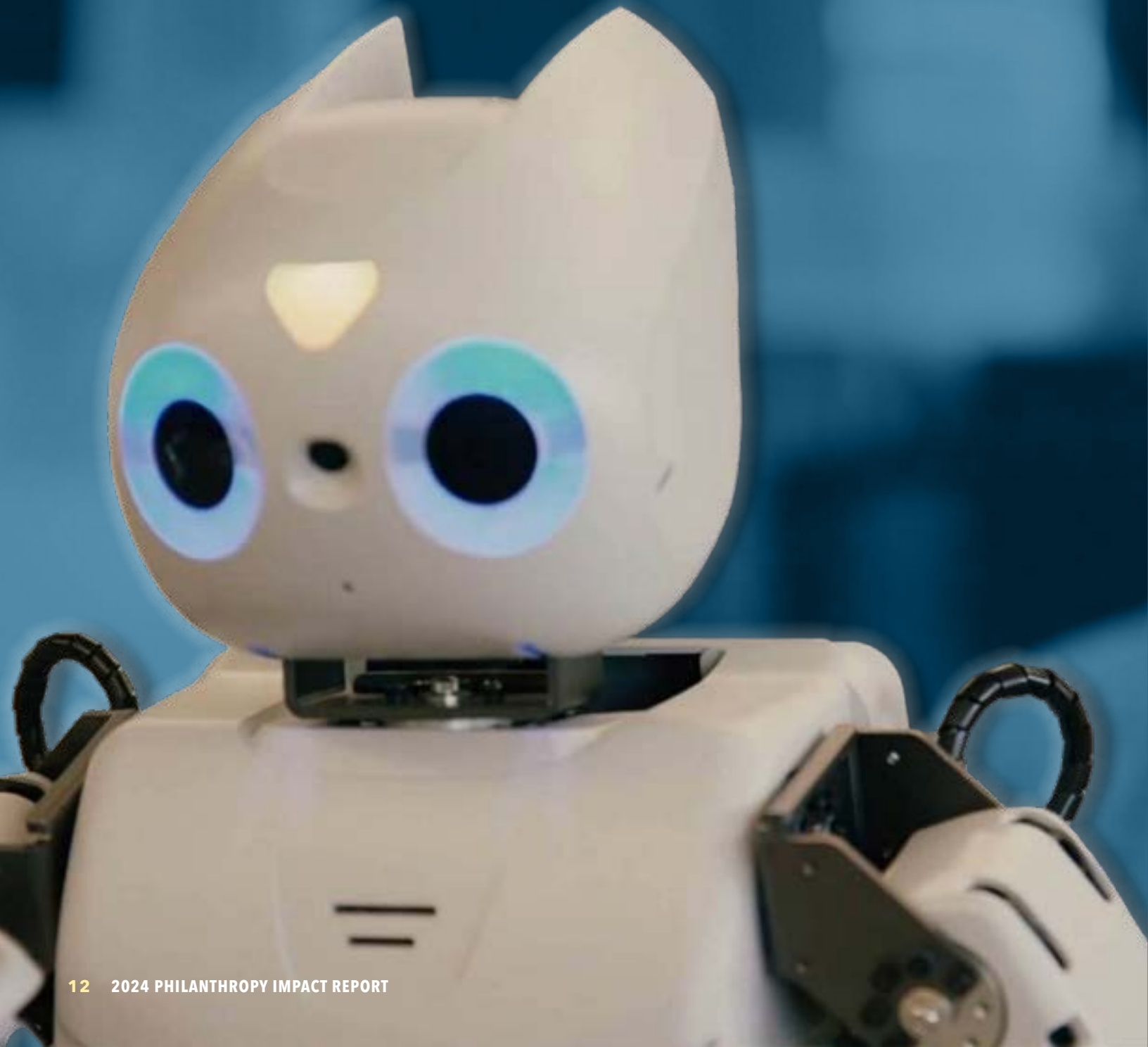
And the future is healthy. Last year, dermatologist **Antonia Kofinas, B.A. '07, M.D. '11**, and fertility specialist **Jason Kofinas, B.A. '05, M.D. '09**, made the largest gift in the program's history, which will support up to five students throughout their GW medical education.



GW faculty and students have launched more than **350 new ventures** and raised **\$1.8B** in follow-on funding.



GW and the **Smithsonian Institution** have long partnered to advance knowledge, education, and cultural enrichment. Not only do GW students have access to a wide range of internships within the Smithsonian complex, we collaborate on joint research initiatives such as the Slave Wrecks Project, an exhibit on the natural history of the cell phone, and animal locomotion studies with salamanders and sea lions at the National Zoo.





The National Institutes of Health awarded GW researchers \$6.4M to study how the impact of repetitive head injuries from American football and social determinants of health contribute to later-life cognitive function in adult Black male athletes.

*As part of TRAILS, GW Engineering Associate Professor Chung Hyuk Park and Professor Zoe Szajnfarber are working with University of Maryland faculty to extend access to care for autistic children and their families using intelligent robots.*

# Building Tech We Can Trust

As artificial intelligence is increasingly integrated into our daily lives, we must find ways to design it in a way that builds trust.

The **GW Trustworthy AI Initiative (TAI)** is a groundbreaking nerve center for research, education, and collaboration to inform the creation and use of responsible technology.

Bridging the gap between scholarship and policy is one of GW's enduring strengths. At GW TAI, researchers across a range of disciplines are working with government, community, and corporate partners to apply rigorous academic research to inform policy and solve real-world problems. **SAIC**, a Fortune 500 technology company, is the inaugural partner.

**"Partnerships with leaders like SAIC facilitate two-way dissemination: we expect the industry's experience to inspire our research, and our novel solutions to inform their practice."**  
– Zoe Szajnfarber, GW TAI faculty director

A wide range of federal investment enables GW TAI to convene multidisciplinary, multi-institutional teams to jumpstart innovation:

- **The Institute for Trustworthy AI in Law & Society (TRAILS)**, a GW co-led multi-institutional project, has received \$20 million from the **National Science Foundation** and the **National Institute of Standards and Technology** to develop AI technologies that promote trust and mitigate risks, while empowering and educating the public.
- A \$6 million award from **NASA** is supporting a GW-led team of researchers who are investigating how to protect autonomous flying aircraft from cyber attacks that could disrupt safe operations.
- GW's Ph.D. Fellowship in Co-Design of Trustworthy AI Systems has received \$3 million from the NSF to prepare future researchers and policymakers to navigate the opportunities and risks of embedding AI in systems.
- With funding from the NSF, researchers in the **Behavioral Research Insights & DiGital Health Technology (BRIGHT) Institute** at the Milken Institute School of Public Health are developing an AI-powered smoking cessation tool using ChatGPT.



The Planet Forward Frontline Climate Fellowship, supported by a grant from the Helen Gurley Brown Foundation, engages students who report environmental stories from, by, and about underserved communities on the front lines of climate change and environmental inequity.



The GW Center for Excellence in Public Leadership and the Morris and Gwendolyn Cafritz Foundation awarded the 21st Annual Calvin Cafritz Awards. The annual awards have recognized more than 120 D.C. government employees for their dedication and service.



The “**GDub Election Hub**” draws together expertise from across the university to help students, scholars, and policymakers make sense of the 2024 U.S. Presidential election cycle.



In 2023-24, nearly 3,000 members of the GW community recorded 640,669 service hours through the **Honey W. Nashman Center for Civic Engagement and Public Service**.



*Alexander Lucero, B.A. '24, and Associate Professor Samuel Goldman, Executive Director of the Ambassador John L. Loeb, Jr. Institute for Religious Freedom and Democracy*

# Loeb Institute Honors Our Namesake's Vision

Religious freedom for all faiths is a defining American ideal. First advocated by President George Washington in 1790, a national promise to ensure the safety of religious minorities and that, in Washington's words, “gives to bigotry no sanction” was remarkably innovative.

Today, as religious liberty dominates headlines across the globe, GW's **Ambassador John L. Loeb, Jr. Institute for Religious Freedom and Democracy** is at the forefront of critical work to advance scholarship and ensure a new generation understands the centrality of these values to a healthy democracy.

**Alexander Lucero, B.A. '24**, came to GW from a diverse family – his father is a Filipino immigrant and a U.S. Navy veteran and his mother is a third-generation Jewish American. Like many GW students, Lucero built an education in and out of classrooms, mixing courses in law and trade with work at a law firm, a Hebrew school, and the Undergraduate Law Review.

A grant from the Loeb Institute and mentorship from its faculty helped Lucero synthesize his understanding of constitutional law and policy in a research project.

“It was my time at the Loeb Institute that really helped me to take what I learned in the classroom about religious liberty and politics and produce original research on the intersection between those topics,” Lucero said. He also received a Sigelman Undergraduate Research Enhancement (SURE) Award created by GW professors Carol and Lee Sigelman.

In addition to grants to undergraduate and graduate students, the Loeb Institute supports the research of noted scholars from a range of disciplines, sponsors lectures and events, partners with international organizations to advance collaborative data, and holds workshops for high school teachers.

**“In a democratic society, persons of all faiths are equal in the eyes of their government.” – John L. Loeb, Jr.**

**Ambassador John L. Loeb, Jr.**, an accomplished businessman, public servant, and philanthropist, provided the founding gift for the institute in 2016, and his continued investment will exceed \$20 million. The former U.S. ambassador to Denmark, Loeb's experience with anti-semitism during World War II sparked a lifelong passion for promoting religious freedom.

The George Washington University  
Washington, D.C. 20052  
Change Service Requested



**Ellen Johnson Sirleaf**, Nobel Peace laureate and former president of Liberia, speaks with Director of the Elliott School's Institute for African Studies Jennifer Cooke as part of the Bridges Institute/Vivian Lowery Derryck Africa lecture and meetings series. **Vivian Lowery Derryck**, founder of the Bridges Institute and member of the Elliott School of International Affairs Board of Advisors, endowed the lecture series to help strengthen African governments and democracy.